

PRODUCT CODE / CODICE PRODOTTO

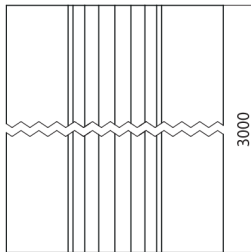
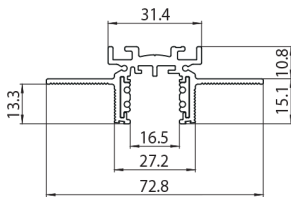
9500-3/W2-ST13-E

DESCRIPTION / DESCRIZIONE

ELECTRIFIED 4-CONDUCTOR RECESSED TRACK TRIMLESS
BINARIO ELETTTRIFICATO A 4 CONDUTTORI DA INCASSO TRIMLESS

TECHNICAL DATA / DATI TECNICI

Rated current and voltage: 15A/60V dc
Rated current and voltage:



FEATURES / CARATTERISTICHE

Materials: External extruded body in aluminium; Insulated extruded body in PVC; Copper conductors
Materiali: Estruso esterno in alluminio; Estruso isolante in PVC; Conduttori in rame

Length: 3000 mm
Length:

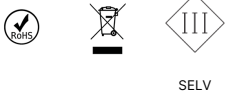
Available colours: White RAL 9016
Colori disponibili: Bianco RAL 9016

Fastening: Trimless
Fissaggio: Trimless

Weight: 3482 g
Peso:

Max load: 25 kg/m - Panel weight/m (see assembly instructions)
Carico: 25 Kg/m - *Peso pannelli/m (vedi istruzioni di montaggio)*

Information / Informazioni



Certifications / Certificazioni



ACCESSORIES / ACCESSORI



9504/ST1-...

Notes / Note

Track for both polarized and non polarized versions
For a correct installation use with S-9500/D1-ST13, to be bought separately.

*Binari per utilizzo in versione sia polarizzata che non polarizzata
Per una corretta installazione utilizzare con art S-9500/D1-ST13, da acquistare separatamente.*