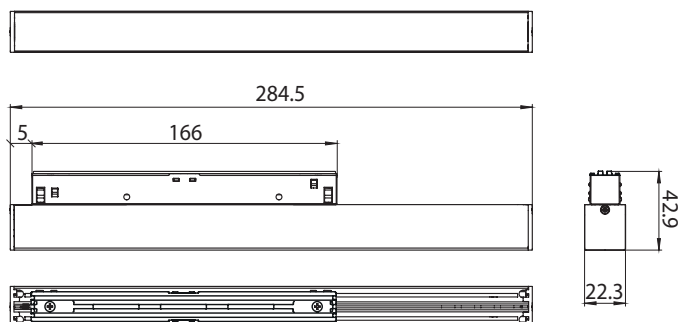
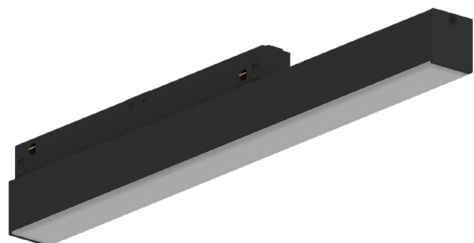
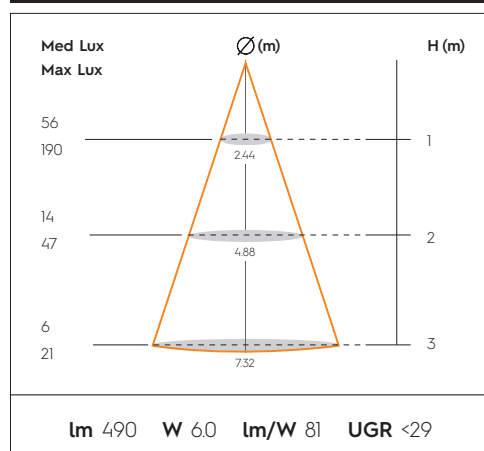
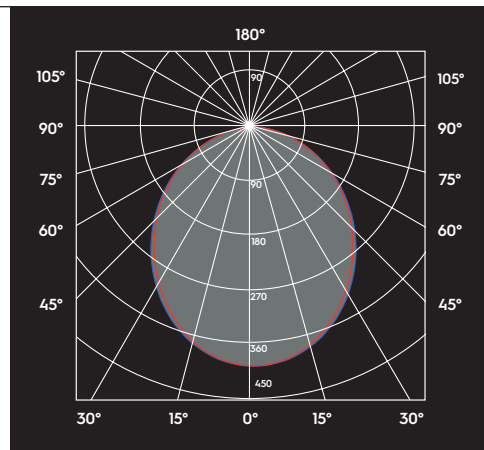


Modulo di luce lineare a 48V. Fissaggio meccanico. Per binari 9500 MULTISYSTEM® / MULTISYSTEM® EVO. Schermo opalino. L(mm): 286. 3000K. CRI≥90: LED.
48V Linear light module. Mechanical fixing. For 9500 MULTISYSTEM® / MULTISYSTEM® EVO tracks. Opal screen. L(mm): 286. 3000K. CRI≥90: LED.



L (mm):	286mm
Materials:	Corpo in alluminio + Schermo Opalino in policarbonato Aluminium body + Polycarbonate Opal screen
Color temperature (K):	3000K
CRI:	≥90
Beam Angle:	101°
Lifetime (Khr):	>50 L90B5
Real Flux (lm):	490
Nominal Flux (lm):	744
Power (W):	6,0
Driver:	ON-OFF / 0-10* / DALI SELV / NO DRIVER
Mounting:	Meccanico / Mechanical
Color:	Nero gofrato / Black embossed - Bianco gofrato / White embossed
MacAdam:	≤3
Weight (g):	270,5
V_F:	39
I LED (mA):	150
LED Source:	LED
Packaging:	Tube / Tube



*Disponibile solo per alcune versioni, richiedi maggiori informazioni
*Available only for some versions, ask for more info